

# Animal Research at UTHealth

**Bríd Áine Nic Dhonnchadha, PhD**

Assistant Director, IACUC

Animal Welfare Committee (AWC) Office

<https://inside.uth.edu/animal-research>



# What is an IACUC?

- The Institutional Animal Care and Use Committee
  - Known locally as the Animal Welfare Committee or **AWC**
  - Ensures that all vertebrate animals used for research are treated ethically and humanely.
  - Members include:
    - Veterinarians
    - Practicing scientists experienced in animal research
    - Non-scientists
    - Non-affiliated members



# Animal Care Regulations

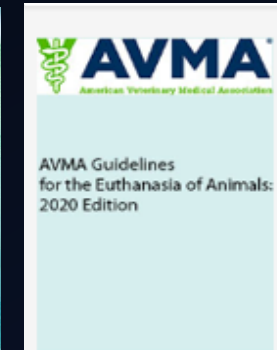
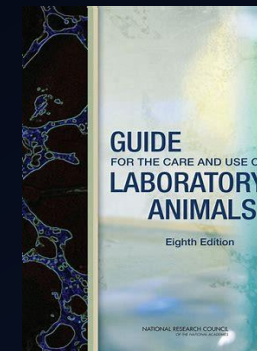
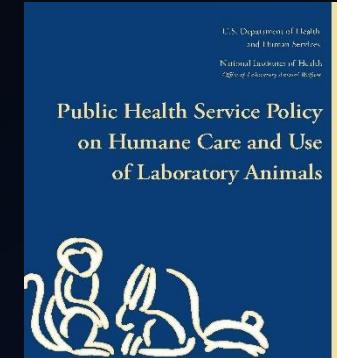
Animal Welfare Act (AWA)  
Public Health Service (PHS) Policy

Federal Agencies  
(USDA-APHIS, NIH-OLAW)

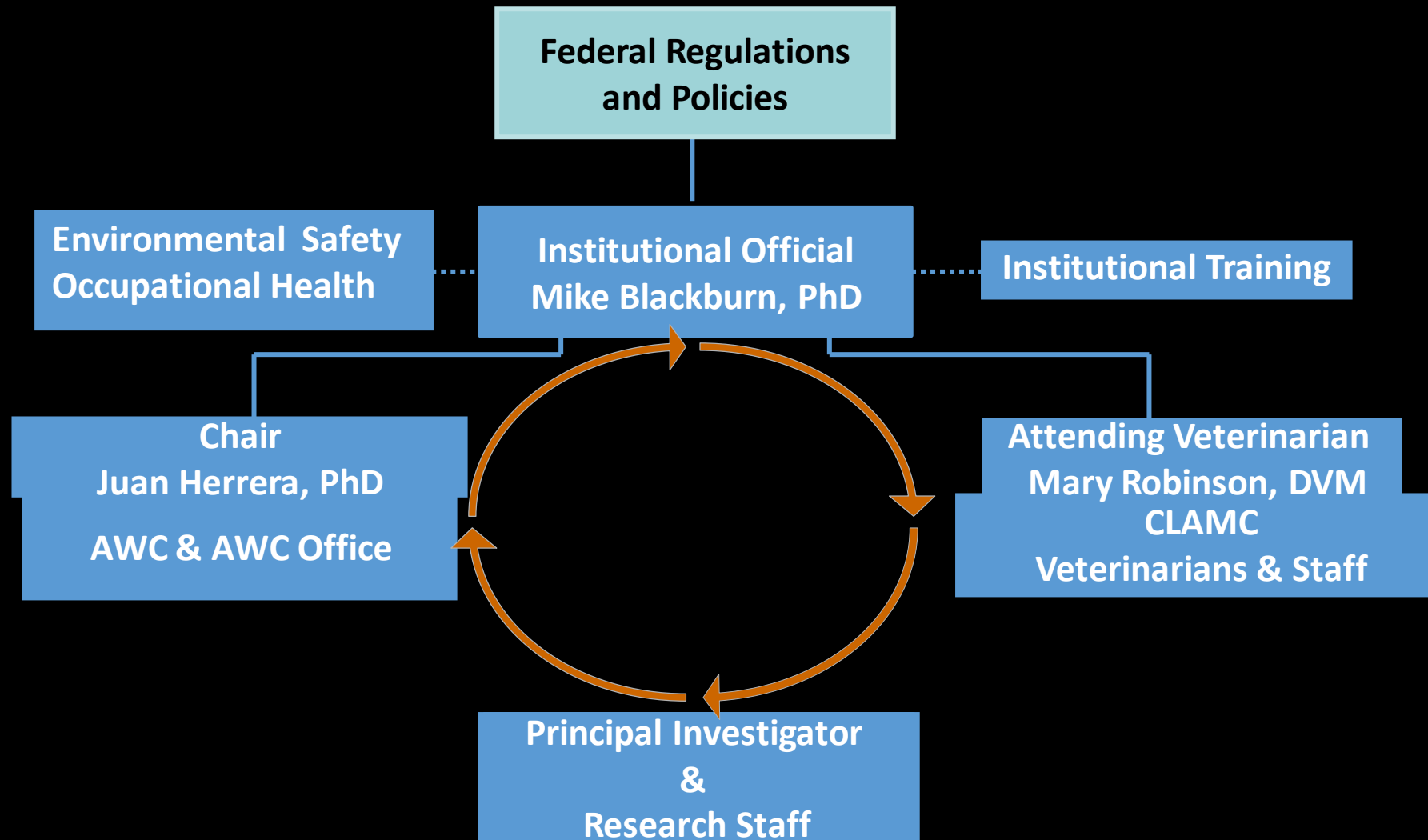
-The Guide for the Care and Use of Laboratory Animals  
-American Veterinarians Medical Association (AVMA)  
Guidelines for the Euthanasia of Animals  
- AAALAC Accreditation Program

AWC, Veterinarians, Researchers

**Animal Welfare & Safety**



# UTHealth Animal Use and Care Program



# When is an AWC animal protocol required?

- Covers all animal activities performed at UTHealth facilities
- All animal activities, even off site, where UTHealth funds are used to purchase the research animals
- Production of custom antibodies
- Tissue harvest protocols with antemortem manipulations

# Requirements to conduct research

- Approved animal protocol-PI must be a faculty member
- Completion of CLAMC training
- Enrollment in Occupational Health Program
- Approval for the use of chemical, biological or radioactive agents
  - SCRO approval for the use of human stem cell in animals
- Disclosure of Research Conflicts of Interest
- Submission of the annual Financial Disclosure Statement

# Animal Protocol Submission

<https://inside.uth.edu/animal-research>

<https://iris.uth.tmc.edu>

## Resources for Animal Researchers

► Investigator Training

iCARE Resources

**iRIS Links**

Animal Research FAQs

Log In

**iRIS** *Integrated Research Information Software*



User ID:

Password:

Log In

**System/Browser Requirements**

For iRIS assistance, call 713-500-7960. For password problems, call the Help Desk at 713-486-4848. System timeout after 120 minutes. SAVE your work!

**Terms of Use | Privacy Statement**

Copyright © 2001-2017 iMedRIS Data Corporation. All rights reserved.  
Version 10.03.1 Build 778 Updated 2017/09/14 10:15

# AWC Considerations for Animal Use

- The rationale provided for using animals
  - What is the significance of this research that can justify animal use?
- Appropriateness of the species
  - Why use this species? Justification for the number of animals to be used
- Were alternatives considered for this research?
  - Minimize the pain and suffering of the animals used
  - Adequacy of training and experience of personnel
  - Description and rationale for anticipated or selected endpoints



# AWC website resources-Policies for Animal Research

<https://inside.uth.edu/animal-research>








## Resources for Animal Researchers

### Policies for Animal Research

Occupational Health Program for  
Personnel with Animal Exposure

Reporting Animal Welfare  
Concerns

Contact Us

- [Non-pharmaceutical Grade \(NPG\) Compound Policy](#) 
- [Rodent Surgery Policy](#) 
- [Rodent Toe Clipping Policy](#) 
- [Rodent Tumor Policy](#) 
- [Standards for Sanitation Policy](#) 
- [Tissue Collection in Rodents for Genotyping Policy](#) 
- [Tribromoethanol Policy](#) 

# AWC website resources-Policies for Animal Research

## <https://inside.uth.edu/animal-research>

### Resources for Animal Researchers

iRIS Links

**Animal Research FAQs**

Grant Guidance

Protocol Guidelines and Meeting  
Dates

### Animal Research FAQs

Questions for the Animal Welfare Committee? Contact us at 713-500-3625 or  
via email [awc@uth.tmc.edu](mailto:awc@uth.tmc.edu).

Who can be the Principal Investigator on a protocol?



Where can I find the animal protocol application?



How do I make an amendment/change to my already approved animal protocol?



How do I get access to iRIS?



When are protocol applications due?



When do I have to renew my animal research application?



How do I add new personnel to my protocol?



Where do I find information about animal training courses?



How do I obtain CLAMC animal resource facility access?



How do I add a title or new Grant agency to my protocol approval letter?



Who can I contact with questions regarding animal protocols?



# AWC website resources-Breeding Calculator

<https://inside.uth.edu/animal-research>

## Forms and Resources

### Resources for Animal Researchers

#### Forms and Resources

	Strain	Number of mice needed for experiments	Years remaining in project	Sexes needed	Surplus mice	% of useable genotypes	Average pups per litter	Average litters per female		Total number per strain (incl surplus)	Total number for breeding
	ADA +/-	500	3	Both	10%	25.0%	6	4			
A.				Both							0
B.				Both							
C.				Both							
D.				Both							
E.				Both							
F.				Both							

### Resources for Investigators

[rebecca.torres@uth.tmc.edu](mailto:rebecca.torres@uth.tmc.edu)

# Protocol Review Timeline



# AWC website resources

<https://inside.uth.edu/animal-research>

## Resources for Animal Researchers

### Protocol Guidelines and Meeting Dates

AWC Review Fees

Forms and Resources

Policies for Animal Research

Suggested Initial Submission Date	Return Responses to Pre-Review by	For Review on: (AWC meeting)
January 3, 2022	January 17, 2022	January 28, 2022
January 31, 2022	February 14, 2022	February 25, 2022
March 1, 2022	March 14, 2022	March 25, 2022
April 4, 2022	April 17, 2022	April 22, 2022
May 2, 2022	May 16, 2022	May 27, 2022

# What happens post-approval?

- Post-approval monitoring visits
- Amendments
  - New personnel, new strains, experiments & procedures
- Report adverse events & protocol deviations
- 3-year renewal

# AWC website resources-Grant Guidance

<https://inside.uth.edu/animal-research>

## Resources for Animal Researchers

iCARE Resources

iRIS Links

Animal Research FAQs

**Grant Guidance**

## Grant Guidance

### Application Information

- AAALAC Accreditation Current Status and Date: Full Accreditation (Unit 000455), March 1, 2021.
- Original date of AAALAC accreditation: May 31, 1978
- PHS Assurance Number: A3413-01 or D16-00257, either number is acceptable
- USDA Registration Number: 74-R-0068
- NIH Guidance for Completion of the Vertebrate Animal Section for [grants](#) and [contracts](#) .
- Description of the Animal Care and Use Resources and Program is provided on the [CLAMC](#) link.

# Grant Congruency-Does the AWC protocol match the grant?

- Satisfy the requirements of the PHS Policy & NIH grants policy
  - General scope of the work
  - Experimental procedures and endpoints
  - Species
  - Approximate number of animals
  - Euthanasia Method
- Grant animal activities  $\neq$  Animal Protocol Activities
  - Amend protocol to be consistent with grant
  - Inform NIH if procedure will not be conducted as originally proposed



# Typical Timeline for Grant Submission



# Contact Information

AWC Office: (713) 500-3625, [awc@uth.tmc.edu](mailto:awc@uth.tmc.edu)

AWC website: <https://uth.edu/animal-research/>

CLAMC main line: (713) 500-7728, [acare@uth.tmc.edu](mailto:acare@uth.tmc.edu)

iRIS helpline: (713) 500-7960, option #2

